

The background is a soft, light pink color with large, irregular watercolor-style washes in shades of pink and red. Scattered throughout are small, delicate pink petals, some in sharp focus and others blurred, creating a sense of depth and movement.

Hanaaz
SUITES
@KL CITY CENTRE

B
L
O
S
S
O
M

I
N

T
H
E

C
I
T
Y



TRANQUIL ELEGANCE:
INSPIRED BY THE SERENITY OF JAPANESE HANA



Nestled amidst the vibrant pulse of Kuala Lumpur, Hanaz Suites @ KL City Centre offers a tranquil sanctuary where modern design blossoms alongside the timeless beauty of Japan. Imagine stepping into a haven of serenity, where polished wood floors and minimalist finishes are complemented by the warm glow of lanterns. Expansive, screen-inspired walls evoke a sense of peace, while carefully curated artworks whisper intriguing stories of the bustling metropolis just beyond your doorstep. This 45-storey residential and office suite haven, featuring 270 thoughtfully designed units, is meticulously crafted to evoke a sense of vibrant spring colours. Every detail, from the calming colour palette to the naturally light-filled spaces, is designed to nurture your well-being and productivity.



YOUR IDEAL ESCAPE

Step outside Hanaz Suites @ KL City Centre and immerse yourself in the vibrant heart of Kuala Lumpur. From this prime location, you can easily access iconic landmarks, indulge in exquisite meals at renowned restaurants, explore the latest trends at international fashion and beauty boutiques, and immerse yourself in captivating exhibitions at world-renowned galleries. The awe-inspiring Petronas Twin Towers and Suria KLCC are just a short distance away. If you're seeking a dose of nature and wonder, the sprawling KLCC Park and state-of-the-art aquarium are just steps away from your serene urban retreat.



Artist's Impression

A
B
R
E
A
T
H
O
F
F
R
E
S
H
A
I
R



Experience the perfect combination of liveable luxury and modern sophistication at Hanaz Suites @ KL City Centre. Our spaces are chic and airy, with a contemporary-cool vibe. The floor-to-ceiling windows allow you to embrace the indoor-outdoor lifestyle. Whether you're in the sophisticated, lushly decorated lobby lounge or on the cleverly designed automated car parking system, you'll be surrounded by a skilful blend of classic Japanese chic and modern design in every inch of our property.



A DUAL OASIS:
DIVE INTO SERENITY
WITH SAKURA BLOSSOMS
AND SENSU ELEGANCE

Hanaz Suites @ KL City Centre isn't just a place to live and work, it's an experience. We provide endless possibilities for mind, body, and soul; a double sided resort sky pool, seamless connectivity at the business-forward co-working hub, and an enviable games room.



Blue Pool: Sensu Elegance

Artist's Impression

Blue Pool: Sensu Elegance

Experience the refined beauty of our Sensu-themed pool. Inspired by the traditional Japanese folding fan, this side features elegant design elements that evoke grace and sophistication. The Sensu pool area is adorned with artistic patterns, creating a serene space that blends cultural heritage with modern luxury. Enjoy the harmonious atmosphere as you lounge by the water, embracing the essence of Japanese elegance.

Together, these pools provide a unique retreat where you can choose between the delicate charm of Sakura blossoms and the timeless elegance of Sensu design, offering a perfect balance of beauty and relaxation at your doorstep.



Pink Pool: Sakura Serenity

Pink Pool: Sakura Serenity

Immerse yourself in the tranquil ambiance of our Sakura-inspired pool. This side of the oasis offers a peaceful retreat, where you can relax on the sunbed of pink petals. The gentle and soft colors of the Sakura blossoms create a soothing environment, perfect for unwinding and reconnecting with nature.

Artist's Impression



Sakura Pool

Seren Pool

Sakura & Seren Pool

Artist's Impression



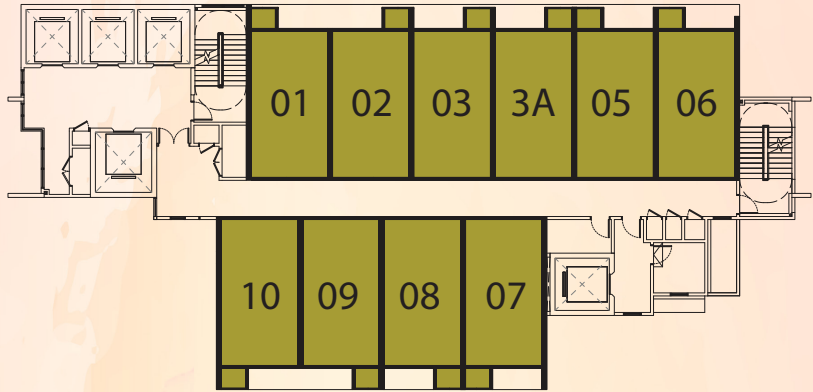
HANAZ

TYPE A

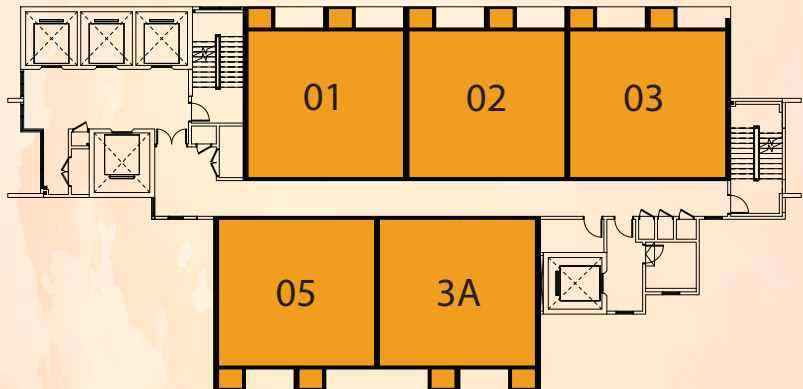
TYPE B

TYPE C

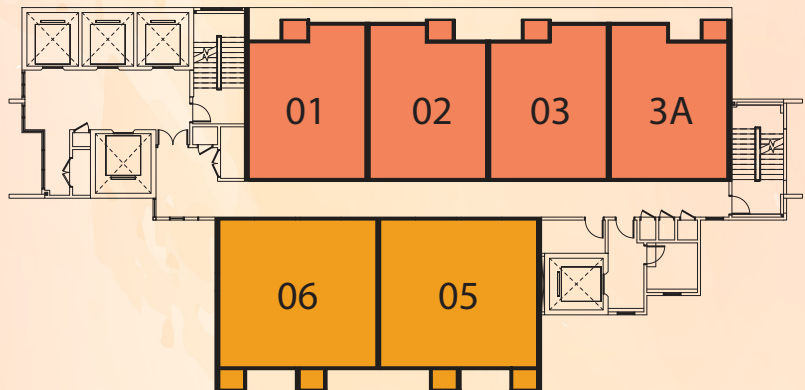
LEVEL 3A - 21



LEVEL 22 - 28



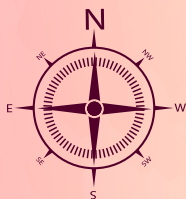
LEVEL 29 - 39



L
A
Y
O
U
T

P
L
A
N
S

D'MAYANG CONDO/
FUTURE OFFICE TOWER/
PANORAMA CONDO/
SCARLETT SUITES

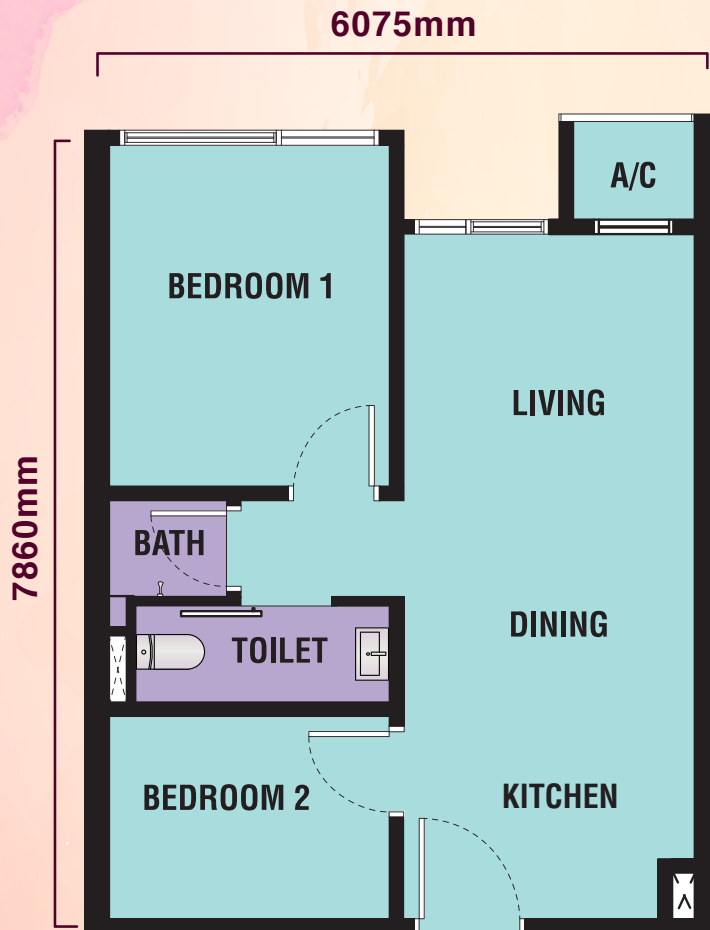


AVENUE K/
FOUR SEASONS HOTEL

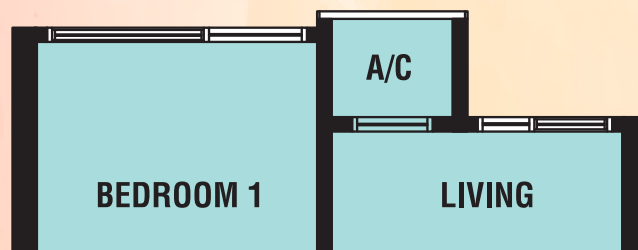
HAWAZ

TYPE **A1**

2R1B | 484sq.ft. | 45sm



TYPE **A2**

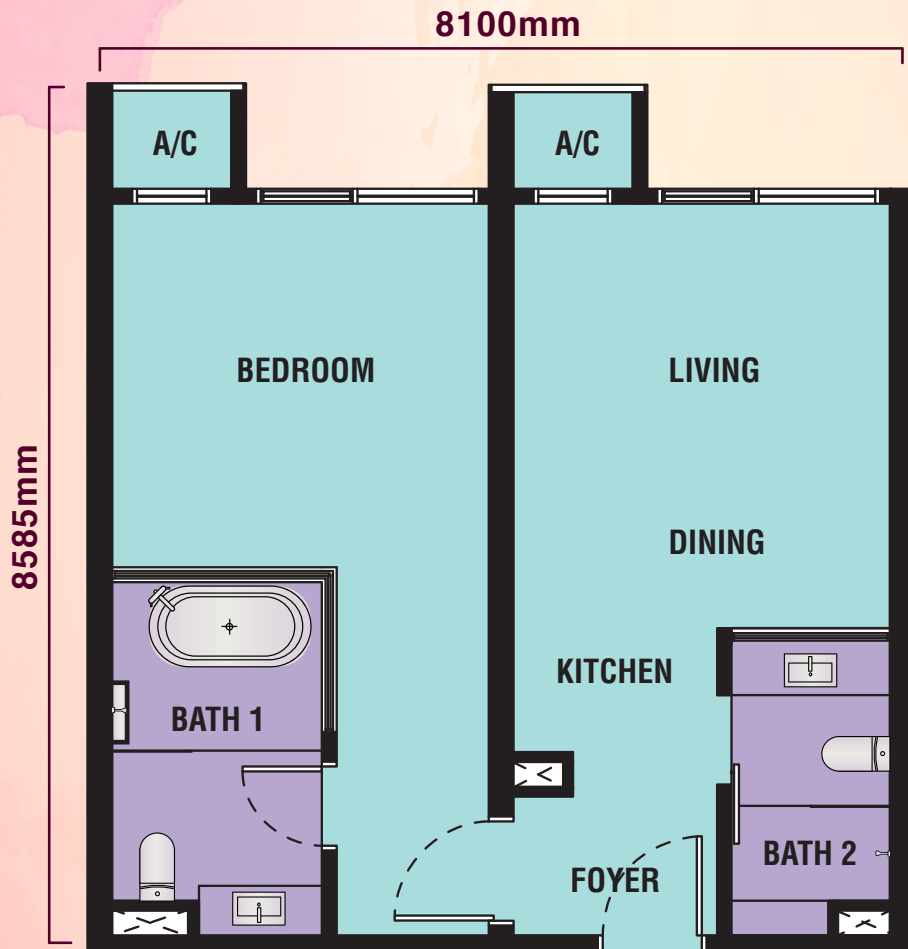


HANAZ

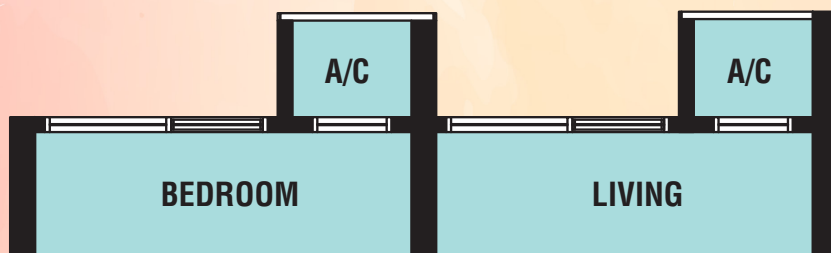
TYPE **B1**

1R2B | 657sq.ft. | 61sm

T
Y
P
E
B



TYPE **B2**

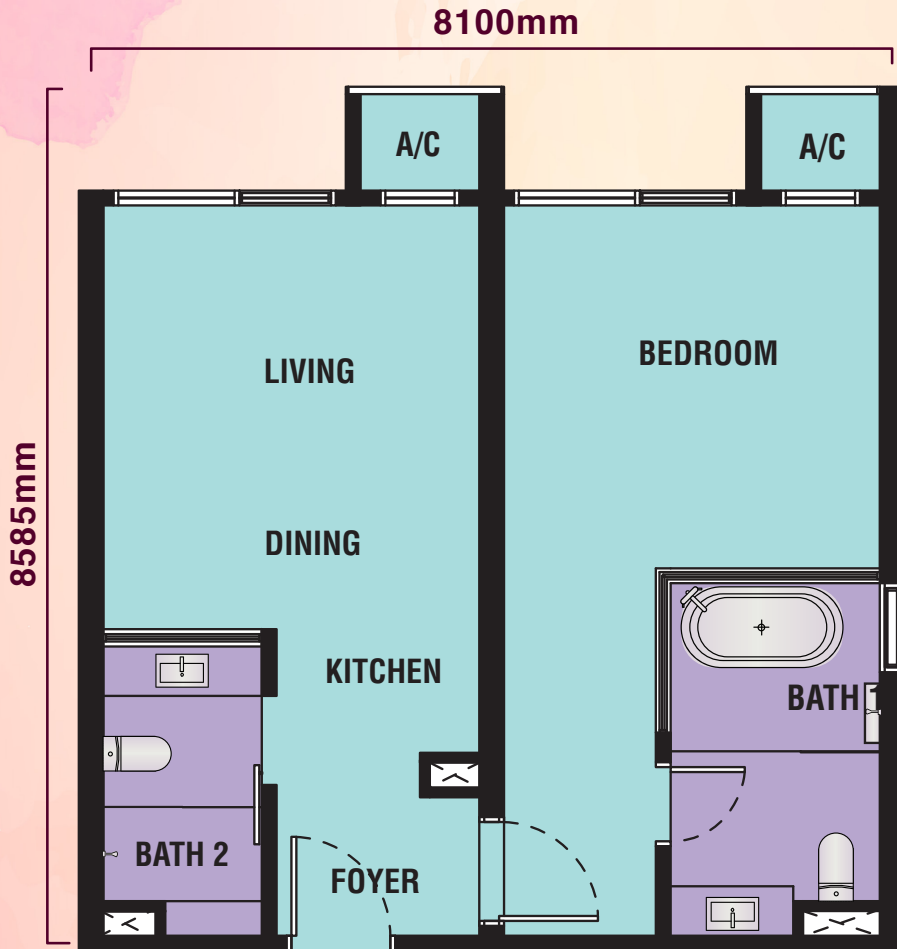


HANA

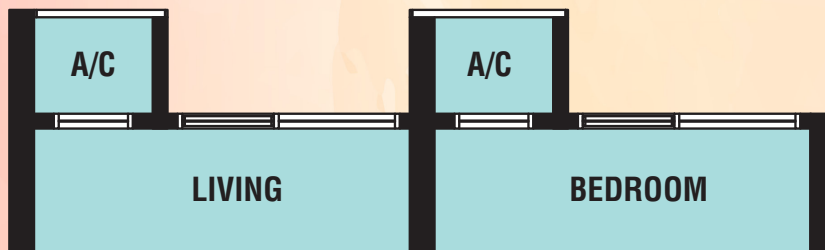
TYPE **B3**

1R2B | 657sq.ft. | 61sm

T
Y
P
E
B



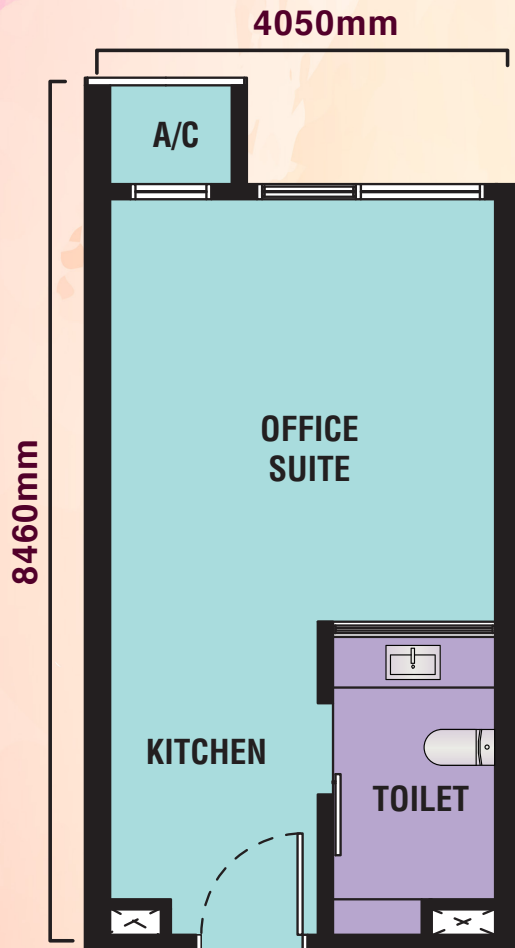
TYPE **B4**



HANAZ

TYPE C1

Studio Office | 323sq.ft. | 30sm



TYPE C2



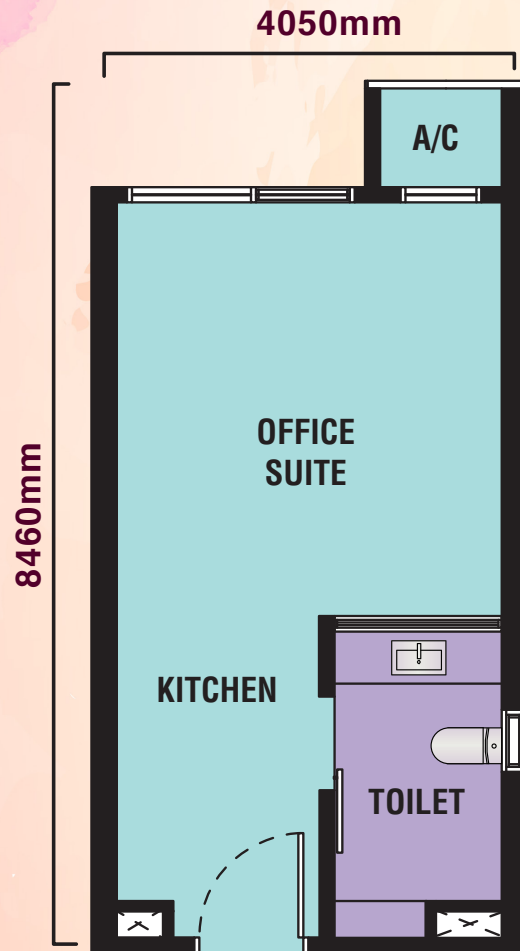
HANAZ

TYPE C3

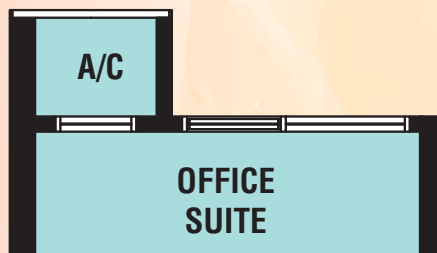
Studio Office | 323sq.ft. | 30sm

T
Y
P
E

C



TYPE C4



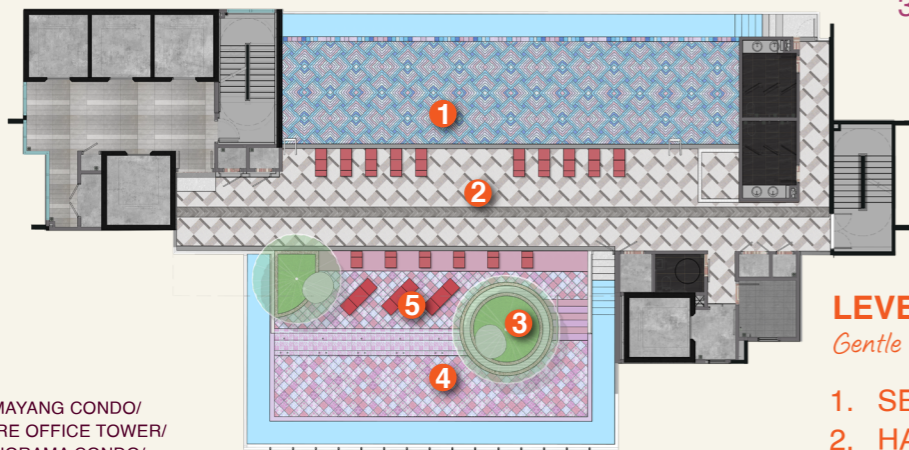
SKY FACILITIES PLAN



LEVEL 43

Chic & Airy

1. MEETING SPACE
2. MIND SPACE
3. PARTY LOUNGE

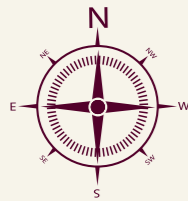


LEVEL 42

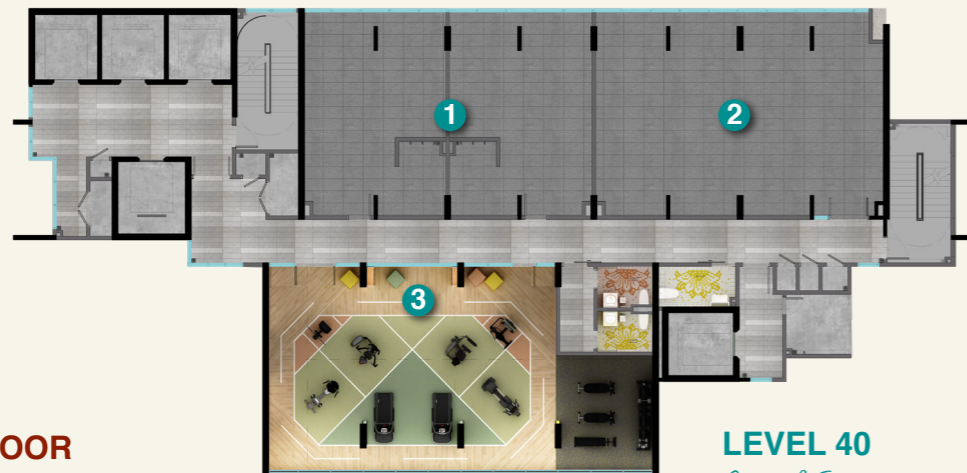
Gentle Relaxation

1. SENSU POOL (BLUE)
2. HANAZ POOL DECK
3. ROMANSU ISLAND
4. SAKURA POOL (PINK)
5. AI (LOVE) POOL LOUNGE

D'MAYANG CONDO/
FUTURE OFFICE TOWER/
PANORAMA CONDO/
SCARLETT SUITES



AVENUE K/
FOUR SEASONS HOTEL



LEVEL 40

Grace & Ease

1. SURAU
2. MANAGEMENT OFFICE
3. SKY FITNESS

GROUND FLOOR

Inflorescence

1. CONCIERGE
2. HANA'S LOBBY

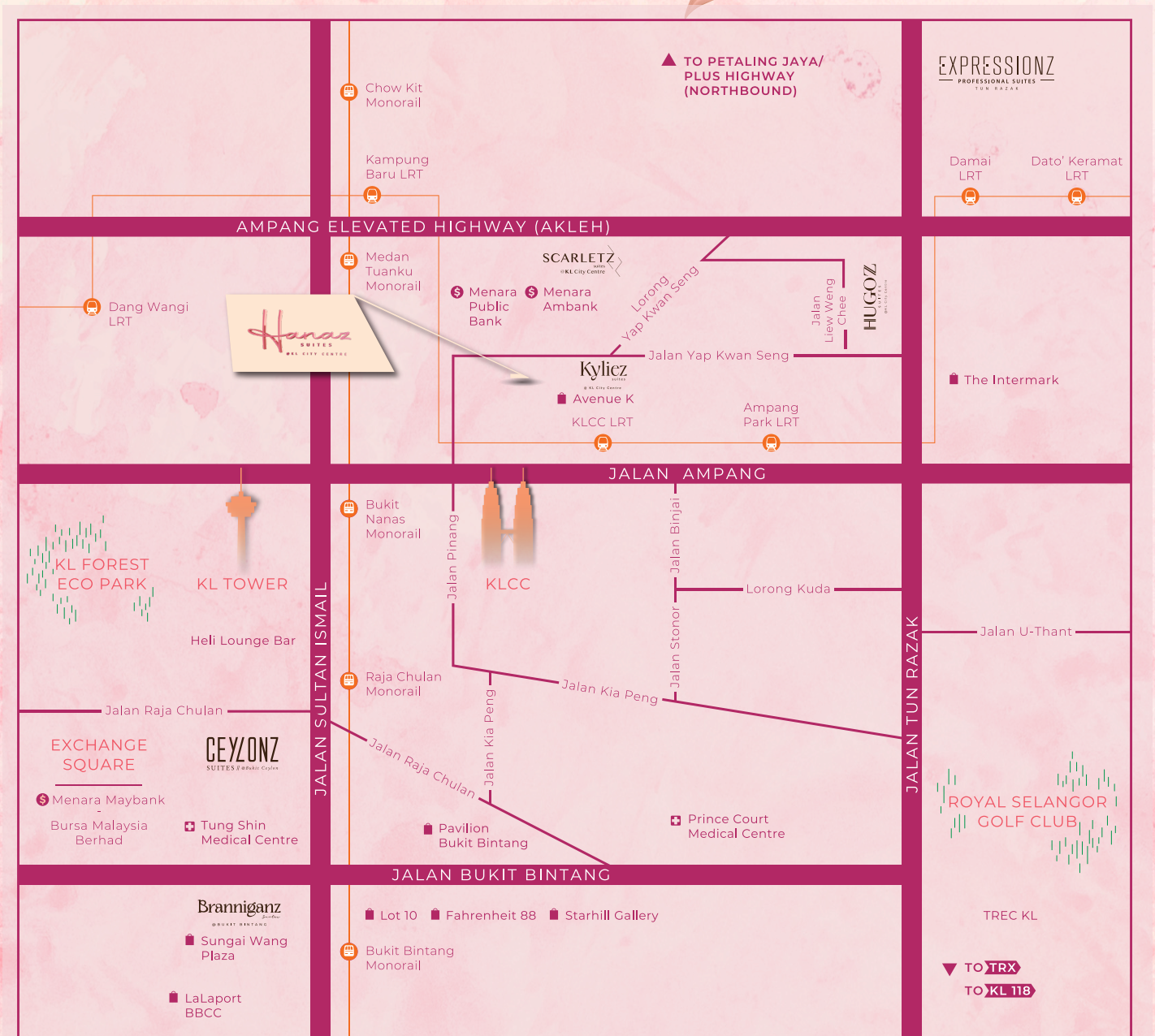
LEVEL 01

Blossom Encounter

1. BLOSSOM LOUNGE



ELEGANCE AND EASE



Location is crucial, and the Kuala Lumpur City Centre neighbourhood couldn't be more central. With famous neighbours like the Petronas Twin Towers and Avenue K, it's difficult to find a more convenient and desirable address. With excellent transport links and proximity to major business hubs, the location offers perfect urban accessibility. Whether you're commuting to work or exploring the city's cultural landmarks, everything is within easy reach. Experience the perfect balance of convenience and elegance in Hanaz Suites @ KL City Centre.



  **EXSIM KL Sales Gallery**

G-01, Menara Sutera Damai,
No 10, Lorong Yap Kwan Seng,
Bukit Kewangan, 50450 Kuala Lumpur.

M: +010 271 9912

W: hanaz.com.my

SUNRISE CHARM SDN BHD (201001022738 (906508-X))

D-35-01, Level 35, EXSIM Tower,
Millerz Square @ Old Klang Road, Megan Legasi,
No. 357, Jalan Kelang Lama, 58000 Kuala Lumpur.

T: 03 7963 1999

W: exsim.com.my

E: info@exsim.com.my

All information, items and/or products herein contained and/or displayed, including but not limited to measurement, features, materials, specifications, brands, colours, plans, drawings, images, pictures, visual renditions, illustrations and presentation of interiors, furniture and fittings layout, landscapes, roads, access, lifestyle, scale models, show units and/or development are artist's impressions/renderings for illustration purposes only and are subject to change as may be required and/or recommended by the relevant authorities and/or the developer's architects, engineers and/or consultants without prior notification to you. Nothing contained herein shall be taken as identical representation of the actual state thereof or constitute or be construed to constitute an offer, a contract, part of the sale and purchase agreement (SPA), a representation and/or warranty on the part of the developer, unless expressly and specifically incorporated in the SPA. Prospective purchasers are advised to read and scrutinize the SPA together with its enclosures or to engage relevant independent professionals for advice prior to signing of the SPA. The developer and/or other related companies and parties shall neither be held responsible for any claims, error or inaccuracy nor be liable for any losses, damages, costs, expenses, or liabilities that may be incurred, suffered or sustained resulting from any reliance on any information, items and/or products herein contained and/or displayed or any part thereof.